

PULPRIOT SEMI-PERMANENT SWATCH CHART

SEMI-PERMANENT BEST PRACTICES

STEP 1: PICK YOUR COLOUR

Vibrant and bold, all of our semis can be used on their own, intermixed to create your ideal shade, or pastelized by mixing them with our CLEAR Semi-Permanent Colour.

STEP 2: FIND YOUR CANVAS

This swatch chart will help you see how colour looks on each level of hair. Use it to select a semi shade, or when comparing to the level canvas you're applying colour to.

STEP 3: START PAINTING

Apply **Semi-Permanent Colour** to clean, dry hair. Leave on for 25-40 min at room temperature. No developer needed, use straight out of the tube.

STEP 4: RESET

Change up your colours with ease. **Blank Canvas** is the most gentle and effective way to remove **Pulp Riot Semi-Permanent Colour**.

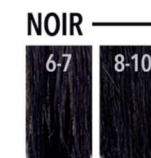


STEP 5: REPEAT!

FIND THIS AND MORE ON



THE ORIGINALS



NEONELECTRIC

RAVEN

NEOPOP

IMAGES ARE COLOUR GUIDES ONLY AND SUBTLE VARIATIONS MAY OCCUR IN PRINT OR ON SCREEN