

# FAQ

## WHAT IS IT?

This Italian made permanent color is made for the modern hair artist, and utilizes the newest advances in hair color technology. It provides 100% grey coverage with long-lasting results, and leaves the hair in peak condition.

## HOW DO I USE IT?

In a non-metallic bowl, mix 1 part FACTION8 color to 1 part Pulp Riot developer. Apply to dry, unwashed hair. Process 35 minutes. Rinse and shampoo well with Bangkok Color-Safe Shampoo.

## HOW DO I GET THE BEST GREY COVERAGE ON 100% WHITE HAIR?

For optimal grey coverage on 100% white hair, we recommend mixing 1/4 to 1/2 of the Natural series to your formulation. Use shades from the Double Natural (-00) series for intense grey coverage.

## ARE THE NATURAL COLORS WARM OR COOL BASED?

They're cool based.

## WHAT'S THE MIXING RATIO FOR THE HIGH LIFT COLORS?

In a non-metallic bowl, mix 1 part High Lift color to 2 parts Pulp Riot developer. Process for 45 - 55 minutes. High Lift colors are best on levels 5 and higher. We do not recommend mixing High Lift colors with other target shades.

## WHAT ELSE DO I NEED TO KNOW?

- Vegan, not tested on animals, paraben-free
- Bold and vibrant reds and coppers
- Creamy consistency designed for modern-day techniques



**PAIRS PERFECTLY  
WITH OUR ORIGINAL  
DEVELOPERS**

FOR DETERMINING THE VOLUMES OF PEROXIDE	
DESIRED RESULT	PEROXIDE
DEPOSIT ONLY - TONE ON TONE	6 VOL. - 1.8%
GREY COVERAGE - TONE ON TONE	10 VOL. - 3%
GREY COVERAGE - UP TO 1 LEVEL LIGHTER	20 VOL. - 6%
GREY COVERAGE - 2-3 LEVELS LIGHTER	30 VOL. - 9%
GREY COVERAGE - 3-4 LEVELS LIGHTER	40 VOL. - 12%
LIGHTENING UP TO 4.5 LEVELS WITH HIGH LIFT COLORS	40 VOL. - 12%

The Lightening Spectrum indicates the underlying pigment exposed during the lightening process. This will help you to neutralize unwanted tones when lightening, and help to replace tones when re-coloring or filling.

LIGHTENING SPECTRUM		
LEVEL	DESCRIPTION	TONES
10	LIGHTEST BLONDE	VERY PALE YELLOW
9	VERY LIGHT BLONDE	PALE YELLOW
8	LIGHT BLONDE	YELLOW
7	MEDIUM BLONDE	ORANGE/YELLOW
6	DARK BLONDE	ORANGE
5	LIGHT BROWN	REDDISH/ORANGE
4	MEDIUM BROWN	REDDISH/BROWN
3	DARK BROWN	BROWN
1	DARKEST BROWN	DARKER BROWN

**FACTION8**  
BY PULPRIOT

THE  
**CHEAT SHEET**  
2021

# COLOR HART



- 0 NATURAL
- 1 ASH
- 2 VIOLET
- 3 GOLD
- 4 COPPER
- 5 RED/VIOLET
- 6 RED
- 7 MATTE
- 8 BROWN

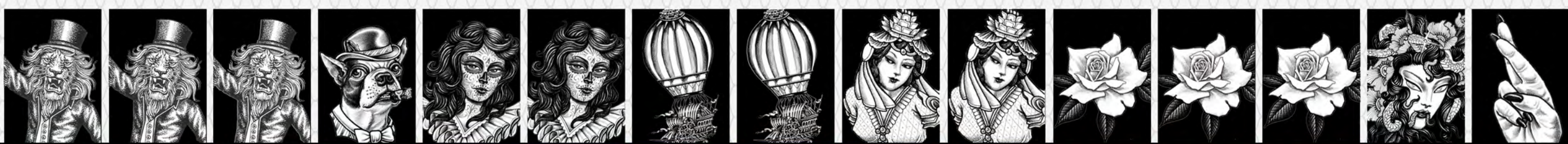
10  
9  
8  
7  
6  
5  
4  
3  
1



**GET MORE  
EDUCATION  
HERE!**

# FACTION8

BY PULPRIOT



## FULL RANGE PERMANENT COLOR

COLOR : DEVELOPER

FACTION8  
MIXING RATIO 1 : 1  
PROCESS TIME 35 MIN

HIGH LIFT  
MIXING RATIO 1 : 2  
PROCESS TIME 45-55 MIN

LEVELS	DOUBLE NATURAL -00	NATURAL -0	NATURAL / GOLD -03	ASH -1	VIOLET -2	VIOLET / VIOLET -22	GOLD -3	GOLD / COPPER -34	COPPER -4	COPPER / COPPER -44	RED / VIOLET -5	RED -6	RED / RED -66	MATTE -7	BROWN -8
10		10-0	10-03	10-1	10-2		10-3								
9	9-00	9-0	9-03	9-1	9-2		9-3		9-4						
8	8-00	8-0	8-03	8-1			8-3	8-34	8-4	8-44					8-8
7	7-00	7-0	7-03	7-1			7-3	7-34	7-4	7-44		7-6	7-66		7-8
6	6-00	6-0	6-03	6-1		6-22	6-3	6-34	6-4		6-5	6-6	6-66	6-7	6-8
5	5-00	5-0	5-03	5-1		5-22	5-3		5-4		5-5	5-6	5-66	5-7	5-8
4	4-00	4-0	4-03			4-22	4-3				4-5	4-6	4-66	4-7	4-8
3		3-0				3-22					3-5			3-7	
1		1-0		1-1											
BOOSTER				-11	-22	-33	-44	-55	-66	-77					
HIGHLIFT	11-00	11-03	11-11	11-02	11-21										
INTERSTELLAR			12-1	12-2			12-4		12-5				12-7		
	12-01		12-11	12-12											

